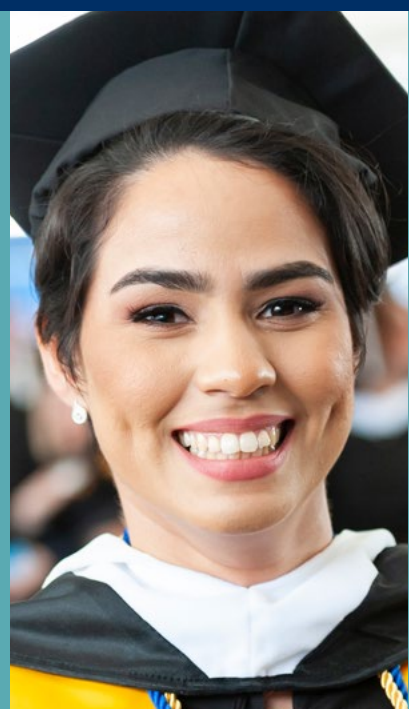


# Academic Catalog

## 2022-2023



Cambridge  
College

[www.cambridgecollege.edu](http://www.cambridgecollege.edu)

500 Rutherford Avenue  
Boston, MA 02129

Admissions: 1-800-829-4723

# Academic Catalog

## 2022-2023



**Cambridge College**

[www.cambridgecollege.edu](http://www.cambridgecollege.edu)

500 Rutherford Avenue, Boston, MA 02129

617.868.1000 • Admissions: 1.800.829.4723

# About This Catalog

This catalog presents current information about Cambridge College's academic programs, courses, resources, policies and procedures for the 2022-2023 academic year (September 1, 2022-August 31, 2023). This catalog has been compiled from the most accurate information available as of the date of publication.

By enrolling in the College, each student agrees to follow all College policies, practices and procedures.

The College reserves the right to change its programs, policies and practices at any time and without notice, in accordance with applicable law. The development, review and updating of College policies and procedures is an ongoing process. Official College policies may be viewed on the College's website.

This catalog does not constitute a contract, and shall not be construed as a binding agreement.

Originally published July 12, 2022. Revised edition published August 19, 2022.

© July 2022, Cambridge College, Boston, MA.

# Contents

<b>Introduction</b> . . . . .	2	<b>School of Education</b> . . . . .	134
Academic Calendar 2022-2023 . . . . .	4	School of Education Programs . . . . .	138
Accreditation and Authorization . . . . .	6	Cambridge College California . . . . .	170
The President's Welcome . . . . .	7	Cambridge College Puerto Rico . . . . .	175
History . . . . .	8	School of Education Course Descriptions . . . . .	194
College Profile . . . . .	10	<b>School of Management</b> . . . . .	234
<b>Admission Requirements</b> . . . . .	12	School of Management Programs . . . . .	236
School of Undergraduate Studies . . . . .	14	Cambridge College Puerto Rico . . . . .	241
School of Education . . . . .	15	School of Management Course Descriptions . . . . .	243
School of Management . . . . .	18	<b>School of Psychology &amp; Counseling</b> . . . . .	252
School of Psychology & Counseling . . . . .	19	School of Psychology and Counseling Programs . . . . .	256
Cambridge College Global . . . . .	21	Cambridge College California . . . . .	269
Non-Matriculated Students . . . . .	22	Cambridge College Puerto Rico . . . . .	270
<b>Student Financial Services</b> . . . . .	23	School of Psychology and Counseling Course Descriptions . . . . .	272
Payment and Refunds . . . . .	23	<b>Cambridge College Global</b> . . . . .	284
Tuition and Fees Rates . . . . .	27	Undergraduate Programs . . . . .	290
Southern California Estimated Total Cost of Attendance . . . . .	28	Undergraduate Course Descriptions . . . . .	313
Cambridge College Global Tuition and Fees . . . . .	30	Graduate Programs . . . . .	326
Financial Aid . . . . .	32	Graduate Course Descriptions . . . . .	338
<b>Academic Advising, Policies, and Procedures</b> . . . . .	38	<b>Main Campus</b> . . . . .	349
Course Registration . . . . .	39	<b>Regional Locations of Cambridge College</b> . . . . .	351
Academic Policies and Procedures . . . . .	42	Lawrence . . . . .	352
Transfer of Credit . . . . .	47	Springfield . . . . .	353
<b>Student Affairs</b> . . . . .	50	Puerto Rico . . . . .	354
Student Rights, Complaints and Grievances . . . . .	52	Southern California . . . . .	355
Violence Against Women Act . . . . .	54	<b>Compliance and Community Policies</b> . . . . .	357
Military Servicemembers, Veterans & Dependents . . . . .	55	<b>Alumni Association</b> . . . . .	360
International Students . . . . .	57	<b>Faculty</b> . . . . .	361
<b>Career Resources</b> . . . . .	60	<b>Governance and Administration</b> . . . . .	371
<b>Academic Support</b> . . . . .	62	<b>Directory</b> . . . . .	373
Center for Excellence in Learning and Teaching . . . . .	62	<b>Appendix A: Academic Policies</b> . . . . .	382
Title III Strengthening Institutions Grant . . . . .	63	<b>Appendix B: Financial Aid Policies</b> . . . . .	393
Early College Program . . . . .	64	<b>Appendix C: Information Technology Policies</b> . . . . .	398
Library Services . . . . .	65	<b>Appendix D: Student Affairs Policies</b> . . . . .	405
Computer Use and Policies . . . . .	65	<b>Index</b> . . . . .	465
<b>School of Undergraduate Studies</b> . . . . .	68		
Undergraduate Programs . . . . .	71		
Accelerated Bachelor's to Master's Degree Programs . . . . .	92		
School of Undergraduate Studies Course Descriptions . . . . .	99		

# Academic Calendar 2022-2023

## Fall Term 2022-2023

### July

01 Financial Aid (FAFSA) priority deadline for Fall 2022-2023

### August

01 Bursar statements posted: Fall 2022-2023  
31 New student orientation—School of Psychology & Counseling (4:30-8:30 pm)  
31 New student orientation—School of Management (5:30-7:30 pm)

### September

01 Fall 2022-2023 term begins  
01 Payment due to Bursar: Fall 2022  
01 New student orientation—School of Education (5:00-7:00 pm)  
01 New student orientation—School of Undergraduate Studies (6:00-8:30 pm)  
05 Labor Day: no classes, offices closed  
05 CCG Fall 1, Grad Fall 1 and 1A classes begin  
06 Fall term CC classes begin  
08 Last day to Add/Drop CCG Fall 1 classes  
08 Last day to Add/Drop CCG Grad Fall 1 and 1A classes  
13 LAST DAY to ADD/DROP CC full-term classes  
19 DBA Session 1 & DSS Term 1A classes begin  
26 Last day to Add/Drop DBA Session 1 & DSS Term 1A classes  
30 Last day to waive health insurance for Fall 2022

### October

01 Registration hold applied for non-payment; late payment fee applied (weekly thereafter)  
09 CCG Grad Fall 1 classes end  
10 Indigenous Peoples' Day: classes held, offices closed  
12 Grades due: CCG Grad Fall 1 classes  
14 Intent to graduate forms for January graduates due to Registrar  
15 Financial aid—final deadline for all Fall 2022 documents  
17 CCG Grad Fall 2 classes begin  
20 Last day to Add/Drop CCG Grad Fall 2 classes  
28 CCG Fall 1 NE classes end  
30 CCG Fall 1 OL classes end  
31 CCG Fall 2 classes begin

### November

01 Financial aid (FAFSA) priority deadline for Spring 2023  
01 **Registration opens for Spring 2023** (9:00 am)  
02 Grades due: CCG Fall 1 classes  
03 Last day to Add/Drop CCG Fall 2 classes  
11 Veterans Day—classes held, offices closed  
18 CC Undergraduates—last day for portfolio submission  
20 CCG Grad Fall 1A and Grad Fall 2 classes end  
23 Grades due: CCG Grad Fall 1A and Grad Fall 2 classes  
24-25 Thanksgiving Holiday: no classes, offices closed  
27 DBA Session 1 classes end  
28 CCG Grad Fall 3 classes begin

### December

01 Bursar statements posted: Spring 2023  
01 Last day to Add/Drop CCG Grad Fall 3 classes  
02 Grades due: DBA Session 1 classes  
05 ILP/ARP and Capstone due to faculty  
15 Last day of CC graduate classes  
19 Last day of CC undergraduate classes

Dec. 20-Jan. 10 Winter recess  
Dec. 25-Jan. 2 no classes, offices closed  
23 CCG Fall 2 NE classes end  
25 CCG Fall 2 OL classes end  
28 Grades due: CCG Fall 2 classes  
30 Grades due: CC Graduate and Undergraduate classes

### January

01 CCG Grad Fall 3 classes end  
01 DSS Term 1A classes end & grades due  
01 Fall 2022 term ends  
04 Grades due: CCG Grad Fall 3 classes  
11 Fall term degree conferral

## Spring Term 2023

### January

01 Payment due to Bursar: Spring 2023  
02 Spring 2023 term begins  
02 DBA Session 2, DSS Term 1B & 2A classes begin  
09 Last day to Add/Drop DBA Session 2 & DSS Term 2A classes  
09 CCG Spring 1, Grad Spring 1 and 1A classes begin  
11 New student orientation—School of Psychology & Counseling (4:30-8:30 pm)  
11 New student orientation—School of Management (5:30-7:30 pm)  
12 New student orientation—School of Education (5:00-7:00 pm)  
12 New student orientation—School of Undergraduate Studies (6:00-8:30 pm)  
12 Last day to Add/Drop CCG Spring 1, Grad Spring 1 & 1A classes  
16 Martin Luther King, Jr. Day: no classes, offices closed  
17 Spring term CC classes begin  
24 LAST DAY to ADD/DROP CC full-term classes  
31 Last day to waive health insurance for Spring 2023

### February

01 Registration hold applied for non-payment; late payment fee applied (weekly thereafter)  
05 DSS Term 1B classes end  
10 Grades due: DSS Term 1B classes  
12 CCG Grad Spring 1 classes end  
13 Intent to Graduate forms for June graduates due to Registrar  
15 Grades due: CCG Grad Spring 1 classes  
15 Financial aid—final deadline for all Spring 2023 documents  
20 CCG Grad Spring 2 classes begin  
20 Presidents' Day: classes held, offices closed  
23 Last day to Add/Drop CCG Grad Spring 2 classes

### March

01 Financial aid (FAFSA) priority deadline for Summer 2023  
03 CCG Spring 1 NE classes end  
05 CCG Spring 1 OL classes end  
06 CCG Spring 2 classes begin  
08 Grades due: CCG Spring 1 classes  
09 Last day to Add/Drop CCG Spring 2 classes  
12 DBA Session 2 classes end  
17 Grades due: DBA Session 2 classes  
26 CCG Grad Spring 1 and Grad Spring 2 classes end  
27 DBA Session 2 & DSS Term 3A classes begin  
29 Grades due: CCG Grad Spring 1A and Grad Spring 2 classes

\*Please note: CCG refers to Cambridge College Global, which includes New England Institute of Business (NE) & CC Online (OL) classes

## April

- 01 **Registration opens for Summer 2023** (9:00 am)
- 03 CCG Grad Spring 3 classes begin
- 03 Last day to Add/Drop DBA Session 3 & DSS Term 3A classes
- 06 Last day to Add/Drop CCG Grad Spring 3 classes
- 06 CC Undergraduates—last day for portfolio submission
- 10 ILP/ARP and Capstone due to faculty
- 17 Patriots' Day: some classes held, offices closed
- 17-21 Spring break: some classes held, offices open
- 24 Last day to withdraw (including medical and special circumstance withdrawals)
- 28 CCG Spring 2 NE classes end
- 30 CCG Spring 2 OL classes end

## May

- 01 Bursar statements posted: Summer 2023
- 01 CC Graduate classes end
- 03 Grades due: CCG Spring 2 classes
- 07 CCG Grad Spring 3 classes end
- 08 DSS Term 2A & 3A classes end, grades due
- 08 Grades due: CC Spring 2023 graduate classes
- 08 Last day of CC undergraduate classes
- 08 Spring 2023 term ends
- 10 Grades due: CCG Grad Spring 3
- 15 Grades due: CC Spring 2023 undergraduate classes
- 21 DSS Term 2B classes end
- 26 Grades due: DSS Term 2B classes

## June

- 04 Spring term degree conferral
- 04 DBA Session 3 classes end
- 09 Grades due: DBA Session 3 classes
- 11 Commencement Exercises

## Summer Term 2023

### May

- 01 Bursar statements posted: Summer 2023
- 09 Summer 2023 term begins
- 09 CCG Summer 1, DSS Term 2B & 3B classes begin
- 12 Last day to Add/Drop CCG Summer 1 classes
- 22 CCG Grad Summer 1 and 1A classes begin
- 25 Last day to Add/Drop CCG Grad Summer 1 and 1A classes
- 29 Memorial Day: no classes, offices closed
- 31 New student orientation—School of Psychology & Counseling (4:30-8:00 pm)

### June

- 01 Payment due to Bursar: Summer 2023
- 01 Financial aid—final deadline for all Summer 2023 documents
- 01 New student orientation—School of Education (5:00-7:00 pm)
- 01 New student orientation—School of Undergraduate Studies (6:00-8:30 pm)
- 05 New student orientation—School of Management (5:30-7:30 pm)
- 05 Summer term CC classes begin
- 12 LAST DAY to ADD/DROP CC full-term classes
- 19 DBA Session 4 & DSS Term 4A classes begin
- 19 Juneteenth: no classes held, offices closed
- 19 Summer Institutes: Online course work begins
- 19 Intent to Graduate forms for August graduates due to Registrar
- 25 CCG Grad Summer 1 classes end
- 26 Last day to Add/Drop DBA Session 4 & DSS Term 4A classes
- 27 Registration hold applied for non-payment; late payment fee applied (weekly thereafter)
- 28 Grades due: CCG Grad Summer 1 classes
- 30 Summer Institutes: New student orientation
- 30 CCG Summer 1 NE classes end
- 30 **Registration opens for Fall 2023** (9:00 am)

## July

- 02-28 Summer Institutes: New student remote classes
- 02 CCG Summer 1 OL classes end
- 03 CCG Summer 2 classes begin
- 04 Independence Day: no classes, offices closed
- 05 Grades due: CCG Summer 1 classes
- 06 Last day to Add/Drop CCG Summer 2 classes
- 07 CC Undergraduates—last day for portfolio submission
- 10 CCG Grad Summer 2 classes begin
- 13 Last day to Add/Drop CCG Grad Summer 2 classes
- 14 ILP/ARP and Capstone due to faculty
- 23 Last day of CC graduate classes
- 29 Grades due: CC Summer 2023 graduate classes

## August

- 04 CCG Grad Summer 1A classes end
- 06 Last day of CC undergraduate classes
- 07 Grades due: CCG Grad Summer 1A classes
- 11 Summer Institutes: Online course work ends
- 11 Grades due: CC Summer 2023 undergraduate classes
- 13 CCG Grad Summer 2 classes end
- 13 DSS Term 3B classes end
- 16 Grades due: CCG Grad Summer 2 classes
- 17 Last day to withdraw (including medical and special circumstance withdrawals)
- 18 Grades due: Summer Institutes
- 18 Grades due: DSS Term 3B classes
- 25 CCG Summer 2 NE classes end
- 27 CCG Summer 2 OL classes end
- 27 DBA Session 4 classes end (grades due 9/1)
- 30 Grades due: CCG Summer 2 classes
- 31 DSS Term 4A classes end & grades due
- 31 Summer term degree conferral; summer 2023 term ends

## International Students Only

### September 2022

- 16 Graduate students in final term Fall 2022: first day to apply for Optional Practical Training (OPT)
- 20 Undergraduate students in final term Fall 2022: first day to apply for OPT

### January 2023

- 31 Graduate students in final term Spring 2023: first day to apply for OPT

### February 2023

- 07 Undergraduate students in final term Spring 2023: first day to apply for OPT
- 13 Graduate students in final term Fall 2022: OPT application **deadline**
- 17 Undergraduate students in final term Fall 2022: OPT application **deadline**

### April 2023

- 24 Graduate students in final term Summer 2023: first day to apply for OPT

### May 2023

- 08 Undergraduate students in final term Summer 2023: first day to apply for OPT

### June 2023

- 30 Graduate students in final term Spring 2023: OPT application **deadline**

### July 2023

- 07 Undergraduate students in final term Spring 2023: OPT application **deadline**

# Accreditation and Authorization

## Regional Accreditation

Cambridge College is accredited by the New England Commission of Higher Education (formerly the Commission on Institutions of Higher Education of the New England Association of Schools and Colleges, Inc.).

Accreditation of an institution of higher education by the Commission indicates that it meets or exceeds criteria for the assessment of institutional quality periodically applied through a peer review process. An accredited college or university is one which has available the necessary resources to achieve its stated purposes through appropriate educational programs, is substantially doing so, and gives reasonable evidence that it will continue to do so in the foreseeable future. Institutional integrity is also addressed through accreditation.

Accreditation by the Commission is not partial but applies to the institution as a whole. As such, it is not a guarantee of every course or program offered, or the competence of individual graduates. Rather, it provides reasonable assurance about the quality of opportunities available to students who attend the institution.

Inquiries regarding the accreditation status by the Commission should be directed to the administrative staff of the institution. Individuals may also contact:

**New England Commission of Higher Education**  
**3 Burlington Woods Drive, Suite 100, Burlington, MA 01803-4514**  
**(781) 425-7785**  
**E-Mail: [info@neche.org](mailto:info@neche.org)**

## State Authorization

### Massachusetts

All Cambridge College's degree programs are authorized by the Massachusetts Department of Higher Education ([www.mass.edu](http://www.mass.edu)). Cambridge College programs preparing students for educator licensure are approved by the Massachusetts Department of Elementary and Secondary Education and are subject to its regulations and standards.

In addition to the Cambridge campus, authorized instructional sites are located in Lawrence, Springfield, and collaborating hospitals.

### Other State Authorization

Cambridge College is also currently authorized or licensed to operate in California and Puerto Rico.

#### California

Cambridge College is a private institution approved to operate by the California Bureau for Private Post-Secondary Education. Approval to operate means the college is compliant with the minimum standards contained in the California Private Postsecondary Education Act of 2009 (as amended) and Division 7.5 of Title 5 of the California Code of Regulations.

Cambridge College has no pending petition in bankruptcy, is not operating as a debtor in possession, has not filed a petition within the preceding five years, and has not had a petition in bankruptcy filed against it within the preceding five years that resulted in reorganization under Chapter 11 of the United States Bankruptcy Code.

Any questions a student may have regarding this catalog that have not been satisfactorily answered by the institution may be directed to the Bureau for Private Postsecondary Education at 1747 N. Market Blvd. Ste 225, Sacramento, CA 95834 • P.O. Box 980818, West Sacramento, CA 95798-0818 • [www.bppe.ca.gov](http://www.bppe.ca.gov) • 916-574-8900 • 888-370-7589 • fax 916-263-1897.

As a prospective student, you are encouraged to review this catalog prior to signing an enrollment agreement. You are also encouraged to review the School Performance Fact Sheet, which must be provided to you prior to signing an enrollment agreement.

A student or any member of the public may file a complaint about this institution with the Bureau for Private Postsecondary Education by calling 1-888-370-7589 or by completing a complaint form, which can be obtained on the bureau's Internet web site [www.bppe.ca.gov](http://www.bppe.ca.gov).

#### Puerto Rico

The Puerto Rico Board of Postsecondary Institutions ([www.ce.pr.gov](http://www.ce.pr.gov)) has authorized Cambridge College to offer selected programs.

# The President's Welcome

**Deborah C. Jackson**  
President



Dear Students,

On behalf of the Board of Trustees, faculty, and staff of Cambridge College, it is my pleasure to say welcome! We invite you to experience the challenging and rewarding educational opportunities we offer at Cambridge College. We also look forward to working with you to help you succeed in your academic studies and advance your professional pursuits.

For over fifty years we have supported the incredible potential of adult learners, helping them to discover uncharted capacity, determination and resilience. With programs in five schools – School of Undergraduate Studies, School of Education, School of Management, School of Psychology and Counseling, and the recently acquired Cambridge College Global – we have the programs available that will help you to grow and develop, explore new interests and succeed in the professional career to which you aspire. Our programs are offered in a schedule designed to fit your busy life at a competitively affordable tuition.

Founded in 1971, Cambridge College is a pioneering institution that continues to charge forward with continued growth in student population, new state-of-the-art facilities and expansion of academic programs that meet the interests and needs of both our students and their future employers.

Our top priority is your academic success, which will position you to achieve your professional goals. Our academic programs are taught by expert faculty who bring a wealth of experience and knowledge into the classroom and are leaders in their fields. Their classrooms will provide you with a rich and unique learning environment where you will discover what it is like to be driven by excellence and innovation. In addition to support in the classroom, faculty, staff, and student support services are available to assist you with all other aspects of college life, including financial aid, academic success coaching, and career resources, to name a few.

Thank you for choosing Cambridge College! I hope to meet you over the course of the year as we celebrate our Golden Anniversary, and I especially look forward to congratulating each and every one of you as you cross the stage at Commencement to receive your diploma—a symbol and acknowledgment of your hard work and dedication. In the meantime, may your journey at Cambridge College be a rich and rewarding one.

Sincerely,

Deborah C. Jackson  
President





## Cambridge College Celebrates 51 Years!

Cambridge College was established in 1971 by a group of educators as the Institute of Open Education, an innovative graduate program offering advanced degrees to teachers and non-traditional adult learners, such as students older than the typical first-time college student, including many with previous college experience but no credential. The founding mission shaped the early institution and continues to guide the College today: *To provide academically excellent, time-efficient, and cost-effective higher education for a diverse population of working adults for whom those opportunities may have been limited or denied.* The mission reflected the essence of Cambridge College's teaching and learning model, characterized by open admission with student-centered, career-oriented academic instruction.

Today, Cambridge College remains a pioneer in higher education focused solely on adult learners. We offer undergraduate and graduate programs tailored to the needs of adult students focused on advancing their careers to meet the demands of tomorrow's workforce. As a fully accredited private non-profit institution with five schools – School of Undergraduate Studies, School of Education, School of Management, School of Psychology and Counseling, and the recently acquired New England Institute of Business, now called Cambridge College Global, Cambridge College was created to advance the lives and careers of adult learners. Classes are offered across flexible schedules and modalities in five locations (Boston, Lawrence, Springfield, MA; Rancho Cucamonga, California; and San Juan, Puerto Rico) and 100% online through CCG.

For over 50 years, the College has maintained its commitment to open enrollment and continues to prioritize the needs of the diverse, working adult students it has always served, who now number over 39,000 alumni.

### Mission

To provide academically excellent, time-efficient, and cost-effective higher education for a diverse population of working adults for whom those opportunities may have been limited or denied.

### Values

Cambridge College is a responsive learning community, where adult learners can find ways to make the personal and professional changes they need to achieve their goals. Learning at Cambridge College takes place in an atmosphere of true diversity, where students support each other in a collaborative learning process that respects their needs and values along with their prior learning and life experiences. The College's innovative adult-centered learning model links theory and practice, helping students to acquire the academic credentials they seek, enrich their lives and careers, and become leaders in their communities.

### History

In 1971, a small group of educators created an educational institution, now known as Cambridge College, whose primary mission was to provide educational opportunities and degree attainment for working adults who did not have ready access to higher education. The art and science of helping adults learn became the foundation of education philosophy at the institution. By blending theory and practice in a developmental and participatory approach, this group of educators developed "the teaching/learning model" specifically for adult learning and to benefit those who may not have had opportunities for a college education.

The College was first known as The Institute of Open Education within Newton College of the Sacred Heart, and later became part of the Antioch University Network. In 1981, it became an independent, private non-profit institution with the new name of Cambridge College. A Master of Education was the initial degree program launched at the graduate level; it successfully supplied the growing need for teachers, especially in urban settings. The mission and philosophy of the College drew the attention of students from businesses, non-profit and social service agencies, and other professions. As this learning community grew, the College expanded to offer a broad range of academic programs, including the Master of Business Administration, Bachelor of Arts, Bachelor of Science, and Certificate of Advanced Graduate Studies.

Today, Cambridge College also serves the educational needs of students outside of its main campus location in Boston, Massachusetts. The College has regional locations in Springfield and Lawrence, Massachusetts, and in California and Puerto Rico. The College aspires to be a visionary organization and learning community for its constituents. Through the dynamic learning processes that are the foundations of our educational model, and our dedication to our mission, we believe we are serving and transforming the lives of adult learners across the national landscape.

On March 13, 2020, Cambridge College acquired the assets of the New England Institute of Business following the unanimous votes of each institution's boards of trustees. This momentous decision brought together two institutions with a combined 150 years serving adult learners pursuing meaningful careers.

### **Distinctive Teaching/Learning Model**

The College's innovative adult-centered learning model links theory and practice, helping students to acquire the academic credentials they seek, enrich their lives and careers, and become leaders in their communities. This model of adult learning has proven resilient and adaptable to new content areas and a variety of learning formats throughout Cambridge College's history. Cambridge College is a learning community in which adult learners experience educational practices that honor and empower them. The College believes that each person can learn regardless of one's age, life history, current circumstances, or past academic experience. Each student's uniqueness, capabilities and experiences are valued in the classroom communities. Our programs develop and enhance skills, competencies, attitudes, values and habits of mind, all enabling our students to competently meet personal needs and professional challenges.

Our coursework is designed to promote collaborative learning, support the use of technology, and to increase content expertise. The real-world diversity of our classrooms provides rich opportunities for examining socially constructed learning in individual research projects and team-based assignments. The majority of our faculty are experienced professionals who bring both academic and professional perspectives to the classroom, thus allowing our students to study current trends in the field. Faculty members and program chairs work with students to build the competencies needed for academic and career success.

### **High Quality and Engaging Student-Faculty Relationship**

According to the Council for Adult and Experiential Learning, reducing barriers for adult students means recreating the roles of faculty to be more facilitators of student learning and less lecturers, and to instill in them the freedom to learn from students without professional embarrassment. By recognizing adult learners as potential co-creators of knowledge and connecting their real life experience to academic theory, students will be able to continually enrich and contribute to their learning process and feel motivated to persist in their educational pursuits.

At Cambridge College, many of our students report that the dynamic learning process has transformed their professional and personal lives. The distinctiveness and efficiency of this model has been long substantiated by our student population; our students regularly praise the quality of the relationships they enjoy with the faculty and highlight it as one of the defining and unique characteristics of a Cambridge College education. Our alumni re-engage with Cambridge College because they see the College not only as an inspiring institution where they acquired their priceless education but also as a community of genuinely caring individuals who continue to believe in, nurture, and admire their resiliency, abilities, and well-deserved accomplishments.

# College Profile

## Our Students

**Adults** — Cambridge College draws a highly diverse population of adults who are serious about learning and earning the degree credentials they need to advance their careers and change their lives. Cambridge College attracts adults based on our goal-directed programming, our experienced faculty, and flexible scheduling.

**Diverse** — Our students are quite diverse in terms of their age, educational background, professional attainment, race, ethnicity, and language, and bring to class a wealth of personal experiences.

**Committed** — Our adult students have made a commitment to their education while working, parenting, and participating as members of their community.

## Student Diversity

Cambridge College was once again named one of the top 100 colleges and universities in the United States that conferred the most degrees to minority students.

### Master's Degrees

	to African Americans	to Hispanics	to two or more races	to Minority Students
Education	n/a	24th	n/a	47th
Mental and Social Health Services & Allied Professions	6th	7th	n/a	8th
Psychology	63rd	52nd	65th	57th

Source: *Diverse Issues in Higher Education* magazine (<http://top100.diverseeducation.com>).

## Faculty Profile

More than 400 active full- and part-time professors (Academic Year 2020-2021); many are active professionals working in their field.

### Full-time faculty

- 17 full-time faculty members college-wide
- 76% with a doctorate or other terminal degree
- 59% female, 41% male
- 25% minority
- average tenure 27 years

### Part-time faculty

- more than 390 active part-time faculty college-wide
- 49% with a doctorate or other terminal degree
- 100% with at least a master's degree
- 52% female, 48% male
- 34% minority
- average tenure 10 years

## Campus Life

Cambridge College locations are in urban settings. Our beautiful new Hood Park central campus in Boston offers a host of amenities, including bright and comfortable gathering areas, large flexible classrooms, state of the art technology, the CC Bistro where fresh food can be grabbed on the run or enjoyed in nearby eating spaces, a CC shop, where college accessories and apparel can be purchased, ample free parking and so much more. Each regional center has a student lounge and vending machines, and public eateries are nearby.

**Housing** — Cambridge College does not require or provide dormitories and/or student housing, nor does it have responsibility to find or assist enrolled students in finding housing.

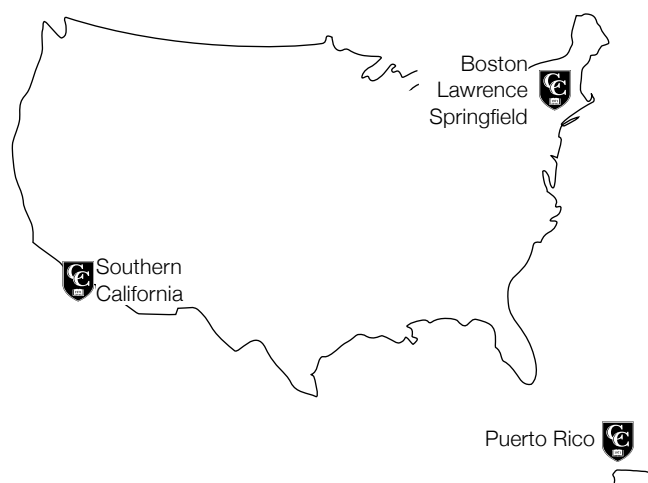
## Boston, MA Location

Cambridge College's four schools are located in the new central campus located in the heart of Boston's historic Charlestown, MA. Our Hood Park campus is easily accessible to communities throughout Greater Boston and the surrounding areas and is easily accessible from various points in and around Greater Boston. The campus is in close proximity to Assembly Row, which features a broad range of retailers, entertainment options, and restaurants.

- School of Undergraduate Studies
- School of Education
- School of Management
- School of Psychology & Counseling
- Cambridge College Global (Online)

## Regional Locations

Our students and alumni have urged Cambridge College to bring its academic programs and culture of adult learning to the people of their own cities and states. Each Cambridge College location offers academic programs established at the main campus, selected to serve local needs, and authorized by state education authorities.



## Academic Schedule

**Convenient evening, weekend, and online classes** accommodate students' work schedules.

**Three terms/year** — Fall and spring terms are 15 weeks for undergraduate programs, and 14 weeks for graduate programs. The summer term is nine weeks for undergraduate programs and seven weeks for most graduate programs.

**Cambridge College Global (CCG) class sessions** vary depending on academic level. Undergraduate courses are eight-weeks long and are offered six times per year (twice per term). CCG graduate courses are five-weeks long and are offered eight times per year. Doctoral courses are ten-weeks long and are offered four times per year.

## Student Demographics Academic Year 2020-2021

	Undergraduate	Graduate	All Students
<b>Enrollment/number of students</b>			
School of Undergraduate Studies . . . . .	797		797
School of Education . . . . .		954	954
School of Management . . . . .		259	259
School of Psychology & Counseling . . . . .		668	668
Cambridge College Global . . . . .	572	222	794
Non-Matriculated . . . . .	289	186	475
Total . . . . .	1658	2,289	3,947
<b>Full-time equivalent</b> . . . . .	716	1,204	1,920
<b>Student status</b>			
full-time . . . . .	17%	27%	23%
part-time . . . . .	83%	73%	77%
<b>Diversity/minority</b> . . . . .	64%	65%	65%
<b>Financial aid recipients</b> . . . . .	56%	58%	57%
<b>Students graduating</b>			
<b>with student loan debt</b> . . . . .	67%	54%	63%
<b>Median age</b> . . . . .	32	35	34
<b>Gender</b> . . . . .			
	74% female	77% female	76% female
	26% male	23% male	24% male
Student to faculty ratio . . . . .	13 to 1		
Degrees/certificates awarded . . . . .	301	680	981
Alumni . . . . .	more than 39,000		

Title II pass rates for the Communication and Literacy Skills Massachusetts Test for Educator Licensure (MTEL) . . . . . 94%

## Financial Aid and Debt

	2018-2019	2019-2020	2020-2021
<b>Financial aid recipients:</b>			
undergraduate . . . . .	65%	45%	56%
graduate . . . . .	60%	55%	58%
<b>Students graduating with student loan debt</b>			
undergraduate . . . . .	70%	49%	67%
graduate . . . . .	67%	69%	54%
<b>Students leaving the College with debt—average amount:</b>			
--Students leaving with a degree			
undergraduate . . . . .	\$31,789	\$29,153	\$21,785
graduate . . . . .	\$31,884	\$31,376	\$29,412
--Students leaving without a degree			
undergraduate . . . . .	\$16,634	\$7,320	\$4,662
graduate . . . . .	\$15,616	\$14,565	\$10,689

	FY2016	FY2017	FY2018
<b>Three-year cohort default rate</b> . . . . .	8.2%	8.1%	5.4%

## Student Diversity 2020-2021

	Undergraduate	Graduate	All Students
American Indian or Alaska Native . . . . .	<1%	<1%	<1%
Asian . . . . .	14%	15%	15%
Black or African American . . . . .	20%	12%	15%
Hispanic, any race . . . . .	26%	34%	31%
Native Hawaiian or Pacific Islander . . . . .	<1%	0%	<1%
White . . . . .	28%	28%	28%
Two or more races . . . . .	3%	3%	3%
International/non-resident alien . . . . .	4%	6%	5%
Race/ethnicity unknown . . . . .	5%	2%	3%

## Enrollment by Location 2020-2021

Boston main campus . . . . .	579	1,241	1,820
Lawrence . . . . .	125	114	239
Springfield . . . . .	100	173	273
Southern California . . . . .	46	39	85
Puerto Rico . . . . .	0	490	490
CC Global . . . . .	808	232	1,040
Total . . . . .	1,658	2,289	3,947